

# USER MANUAL for USB 2.0 PCI Card

## Features

- Compliant with Universal Serial Bus Specification Revision 2.0 (Data Rate 1.5/12/480 Mbps)
- Compliant with Open Host Controller Interface Specification for USB Rev 1.0a
- Compliant with Enhanced Host Controller Interface Specification for USB Rev 0.95
- PCI multi-function device consists of two OHCI Host Controller cores for full/low-speed signaling and one EHCI Host Controller cores for high-speed signaling
- 32-bit 33 MHz host interface compliant to PCI Specification release 2.2
- Supports PCI-Bus Power Management Interface Specification release 1.1
- All downstream facing ports can handle high-speed (480 Mbps), full-speed (12 Mbps), and low-speed (1.5 Mbps) transaction
- Plug & Play and Hot Swapping functions

## System Requirements

- Windows 98/98SE/2000/ME/XP
- Mac OS X 10.1

## Hardware Installation for USB 2.0 PCI Card

1. Turn off the power to your computer and any other connected peripheral devices. Follow the precautions for static electricity discharge.
2. Unplug the power cord from the back of the computer
3. Remove the computer's cover.
4. Select an available 32-bit PCI slot for the new board.
5. Remove the selected slot bracket by unscrewing the holding screw and slide it out. Save this screw for securing the USB 2.0 PCI card after it's installed.
6. To install the USB 2.0 PCI card, carefully align the board's bus connector with the selected expansion slot on the motherboard. Push the board down firmly, but gently, until it is well seated.
7. Replace the slot bracket's holding screw to secure the board to the rear slot panel.
8. Put back the computer's cover.
9. Reconnect the power cord and make new connections to the ports.

## Driver Installation for USB 2.0 PCI Card

- **Under Win 98 / 98SE** – page 2~5
- **Under Win 2000 / ME / XP** – page 6~13

# USER MANUAL for USB 2.0 PCI Card

## Driver Installation Under Win 98 / 98SE

1. Windows will detect new hardware and start the “NEC USB Open Host Controller” driver search program. As Figure 1. Click **Next**.

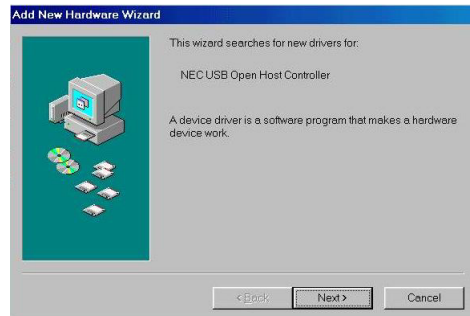


Figure 1

2. Select “Search for the best driver for your device” in Figure 2. Click **Next**.
3. Put your operating system CD in the CD-ROM. Click **Next**.



Figure 2

4. Don't select any location and click **Next**. As Figure 3



Figure 3

5. Select “The updated driver (Recommended) NEC USB Open Host Controller”. As Figure 4. Click **Next**.



Figure 4

# USER MANUAL for USB 2.0 PCI Card

6. See Figure 5. Click **Next** again.



Figure 5

7. After installation, click **Finish**. As Figure 6.

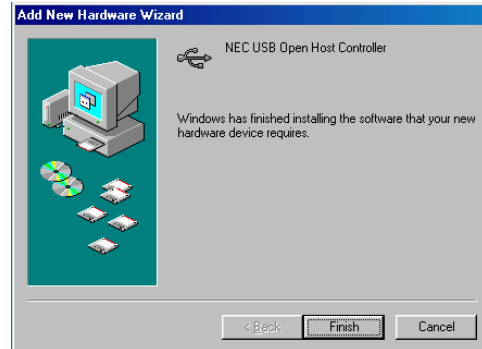


Figure 6

8. As “NEC USB Open Host Controller” driver search program shows up. See Figure 7. Click **Next**.

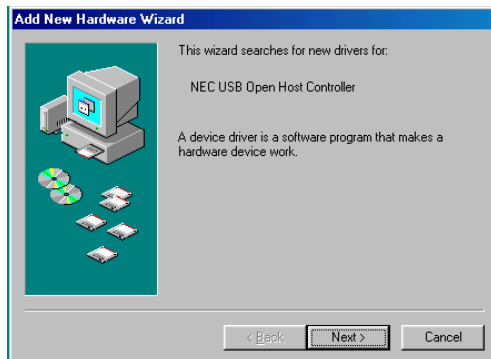


Figure 7

9. Select “Search for the best driver for your device (Recommended)”. Click **Next**. As Figure 8 (The dialog is the same as Figure 2)



Figure 8

# USER MANUAL for USB 2.0 PCI Card

10. Don't select any location, Click **Next**. See Figure 9.



Figure 9

11. Select "The updated driver (Recommended) NEC USB Open Host Controller". As Figure 10. Click **Next**.



Figure 10

12. After installation, click **Finish**. As Figure 11.



Figure 11

13. As "PCI Universal Serial Bus" driver search program shows up. See Figure 12. Click **Cancel**.



Figure 12

# USER MANUAL for USB 2.0 PCI Card

14. Double click the “Explore” under “My Computer” as Figure 13

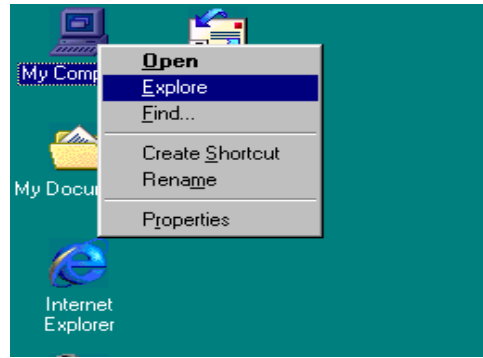


Figure 13

15. Find the file located in “G:\NEC\_USB2.0 PCI Card\PC\U2v2\_062” and double click. As Figure 14

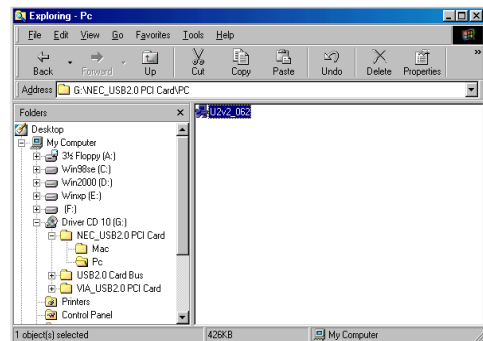


Figure 14

16. Select “Yes, I want to restart my computer” and click Close. As Figure 15

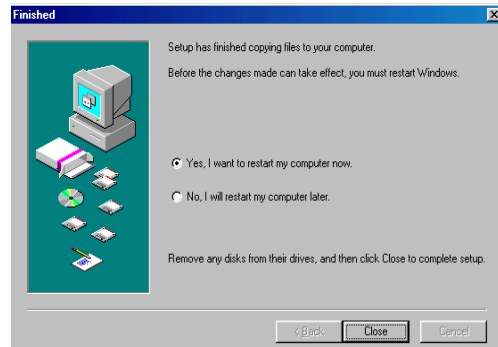


Figure 15

17. Check if the “NEC PCI to USB Enhanced Host Controller” is installed. As Figure 16

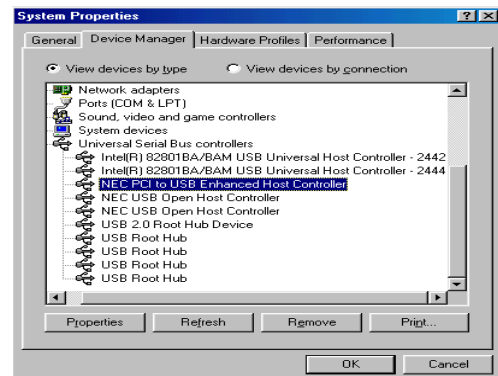


Figure 16

# USER MANUAL for USB 2.0 PCI Card

## Driver Installation Under Win 2000

1. See the welcome page, as Figure 1. Click **Next**



Figure 1

2. Select "Search for a suitable driver for my device (recommended)", as Figure 2. Click **Next**



Figure 2

3. Don't select any location and click **Next**, as Figure 3.



Figure 3

# USER MANUAL for USB 2.0 PCI Card

4. Select “Disable the device” and click **Finish**. As Figure 4



Figure 4

5. Double click the “**Explore**” under “My Computer” as Figure 5



Figure 5

6. Find the file located in “G:\NEC\_USB2.0 PCI Card\PC\U2v2\_062” and double click. As Figure 6

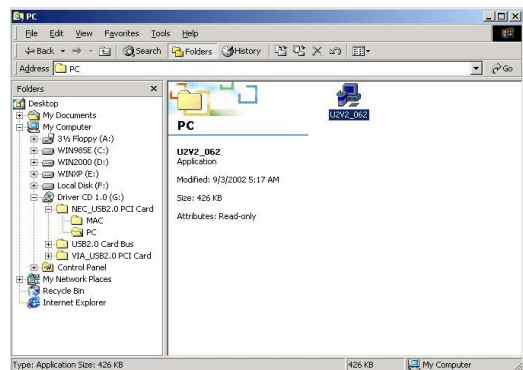


Figure 6

7. Select “Yes, I want to restart my computer” and click **Close**. As Figure 7

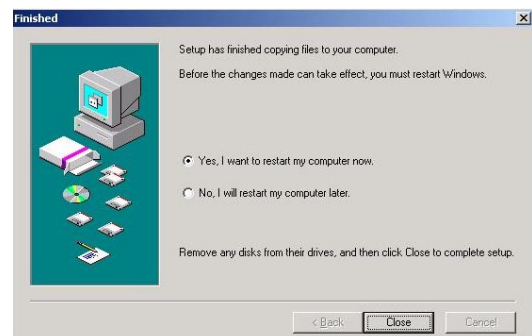


Figure 7

# USER MANUAL for USB 2.0 PCI Card

8. See Figure 8. Check if the “NEC PCI to USB Enhanced Host Controller” is installed.

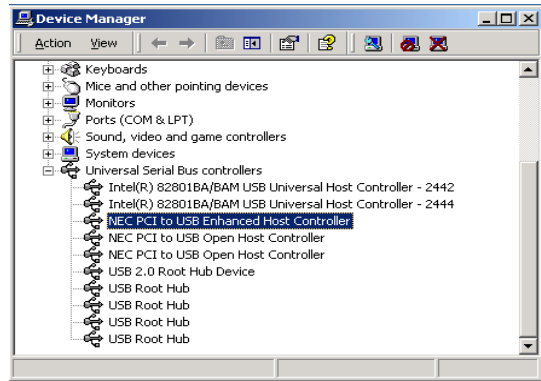


Figure 8

# USER MANUAL for USB 2.0 PCI Card

## Driver Installation Under Win ME

1. Select “Automatically search for a better driver (Recommended)”. Click **Next**. As Figure 1



Figure 1

2. Click **Finish** As Figure 2

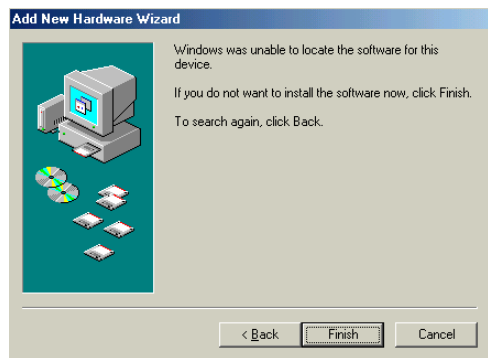


Figure 2

3. Double click the “Explore” under “My Computer” As Figure 3

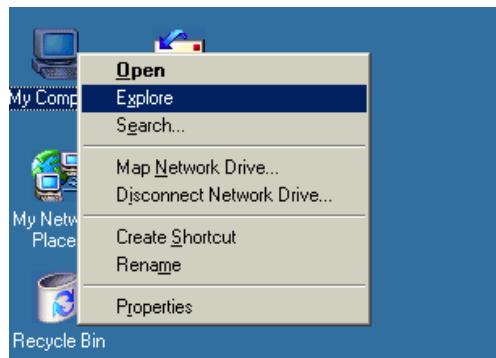


Figure 3

4. Find the file located in “G:\NEC\_USB2.0 PCI Card\PC\U2v2\_062” and double click. As Figure 4

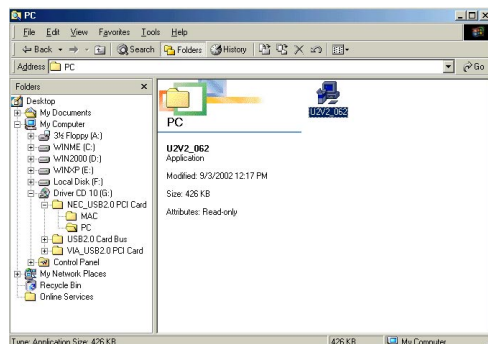


Figure 4

# USER MANUAL for USB 2.0 PCI Card

5. Select “Yes, I want to restart my computer” and click **Close**. As Figure 5

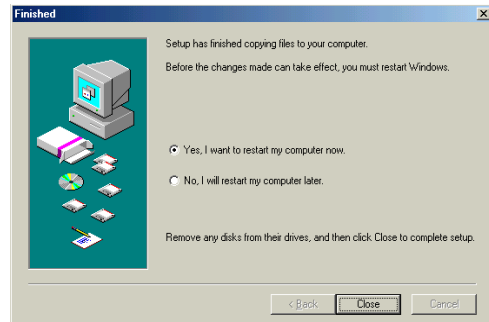


Figure 5

6. See Figure 6. Check if the “NEC PCI to USB Enhanced Host Controller” is installed.

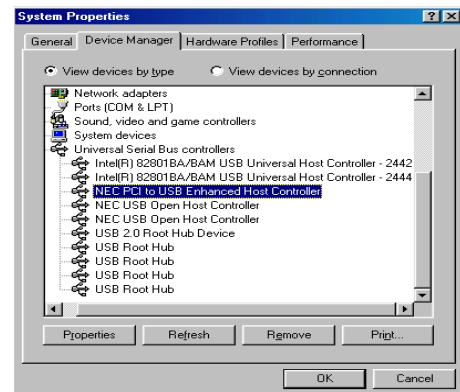


Figure 6

# USER MANUAL for USB 2.0 PCI Card

## Driver Installation Under Win XP

1. Select “install the software automatically (Recommended)”. Click **Cancel**. As Figure 1



Figure 1

2. Double click “**Explore**” under “My Computer” As Figure 2.

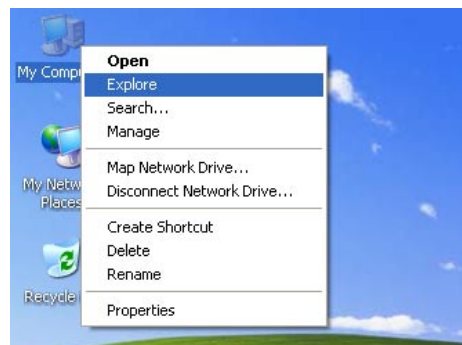


Figure 2

3. Find the file located in “G:\NEC\_USB2.0 PCI Card\PC\U2V2\_064” As Figure 3

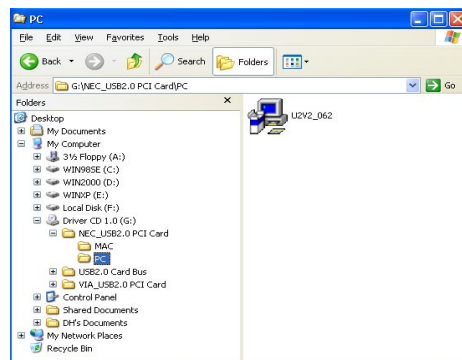


Figure 3

4. Click “**Continue Anyway**” As Figure 4



Figure 4

# USER MANUAL for USB 2.0 PCI Card

5. Select “Yes, I want to restart my computer” and click **Close**. As Figure 5

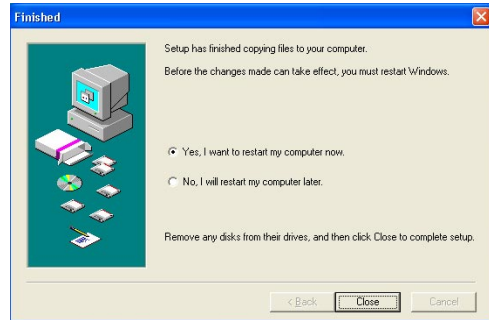


Figure 5

6. Select “install the software automatically (Recommended)”. Click **Next**. As Figure 6



Figure 6

7. Click **Continue Anyway**. As Figure 7

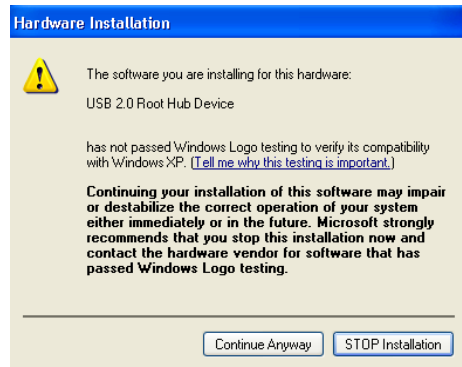


Figure 7

8. “USB2.0 Root Hub Device” has been installed. Click **Finish**, as Figure 8



Figure 8

# USER MANUAL for USB 2.0 PCI Card

- 9 See Figure 9. Check if the “NEC PCI to USB Enhanced Host Controller” is installed.
- Enhanced Host Controller” is installed.

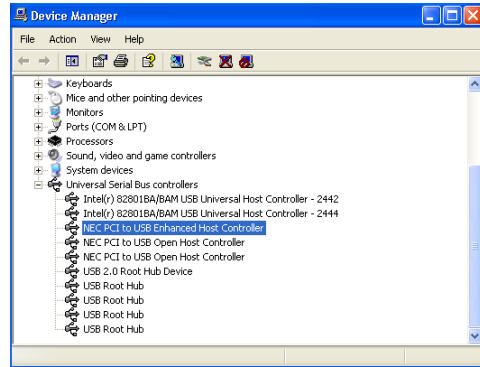


Figure 9